



National Institute of  
Diabetes and Digestive  
and Kidney Diseases

## Office of Clinical Research Support

# NIDDK Data Sharing Landscape: The Role of Generalist Repositories

Virtual Generalist Repository Ecosystem  
Initiative (GREI) Workshop  
January 25, 2023

**Rebecca Rodriguez, PhD, MS**



National Institute of  
Diabetes and Digestive  
and Kidney Diseases

# NIDDK Data Sharing Landscape

We are committed to strengthening & advancing NIH/NIDDK's data ecosystem

## Challenges

- Researchers need options to deposit data
- There is a gap in domain-specific and institution-specific repositories

## Opportunities

- Realize the potential of publicly available data for secondary research
- NIH's GREI initiative demonstrates the agency's vision and commitment to advancing the data sharing ecosystem



# NIDDK Data Sharing Landscape: DMS Policy



What can you find?

- NIDDK-specific DMS guidance and expectations
- Relevant links to [sharing.nih.gov](https://www.sharing.nih.gov) resources
- NIDDK-specific sample DMS Plans and templates
- Repository Selection Considerations

Home \ Research & Funding \ Research Resources \ NIDDK Data Management & Sharing

## Research Resources

- NIDDK Data Management & Sharing
- NIDDK Guidance for Writing a DMS Plan
- NIDDK DMS Tools & Examples

## NIDDK Data Management & Sharing

Beginning January 25, 2023, the National Institutes of Health (NIH) [Policy for Data Management and Sharing \(DMS\)](#) [NIH](#) requires researchers to submit a DMS Plan. The goal of this policy is to maximize the availability of data from NIH-supported research to advance NIH's mission to enhance health, lengthen life, and reduce illness and disability. The DMS policy will provide a consistent, minimum expectation of data management and sharing for all research supported by the agency. Additionally, the policy applies to all research, funded or conducted in whole or in part by the NIH, that generates scientific data. To help investigators implementing the NIH DMS policy, the National Institute of Diabetes and Digestive and Kidney Diseases (NIDDK) offers Institute-specific guidance for drafting a DMS Plan, as well as tools and examples to supplement the [NIH DMS policy and resources](#) [NIH](#).

### NIDDK Guidance for Writing a DMS Plan

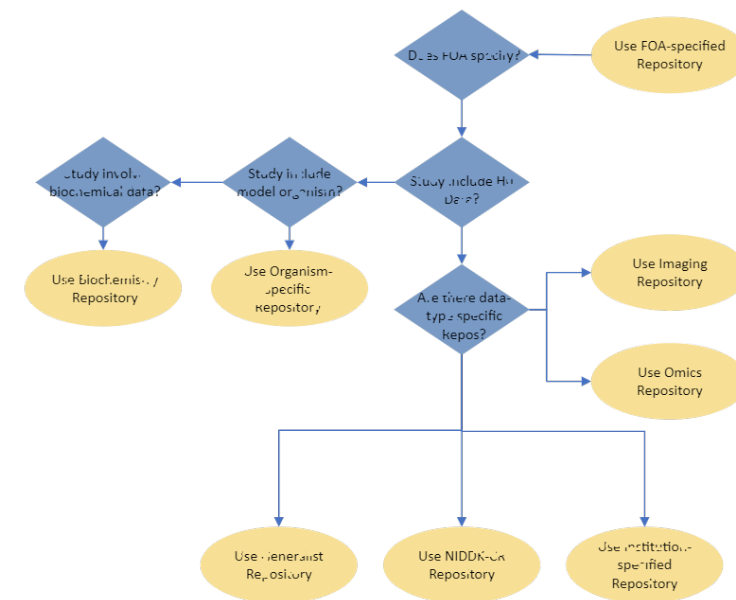
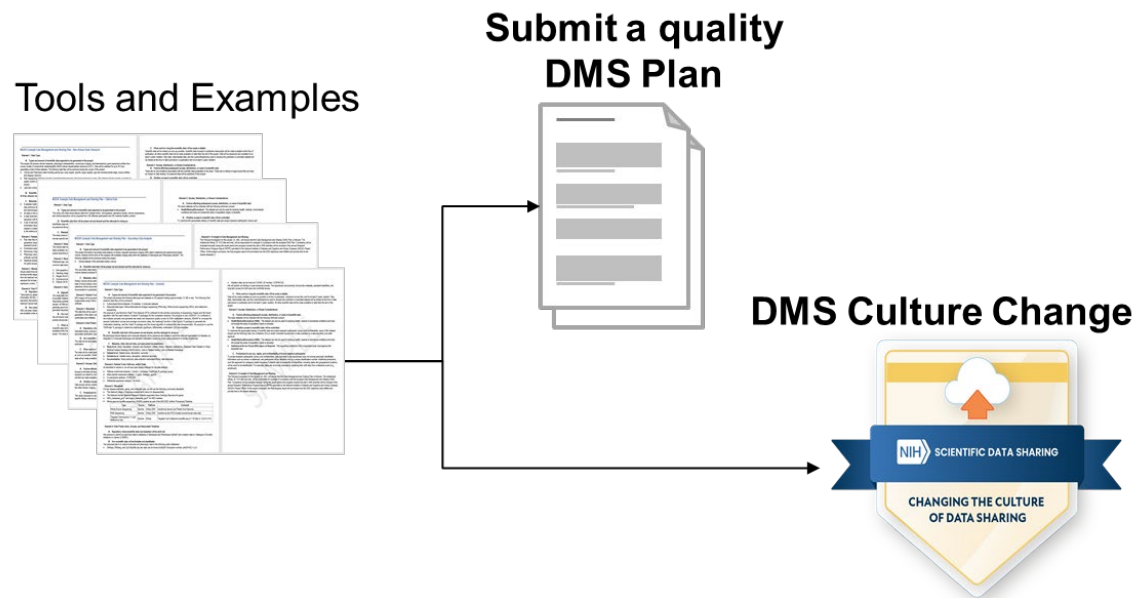
Visit NIDDK DMS Guidance to access NIDDK-specific guidance for the DMS Plan Elements.

### NIDDK DMS Tools and Examples

Visit the NIDDK Tools and Examples to access the DMS Plan Worksheet, examples of DMS Plans and Data Standards, and a tool for Repository Selection Considerations.

# Repository Selection Considerations

- Intended to assist researchers in selecting an appropriate data repository with desired characteristics ([NOT-OD-21-016](#)) to deposit their data and maximize sharing
  - Domain-specific, data type-specific, institution/community based, and generalist repositories



# NIDDK DMS Policy & Role of Generalist Repositories

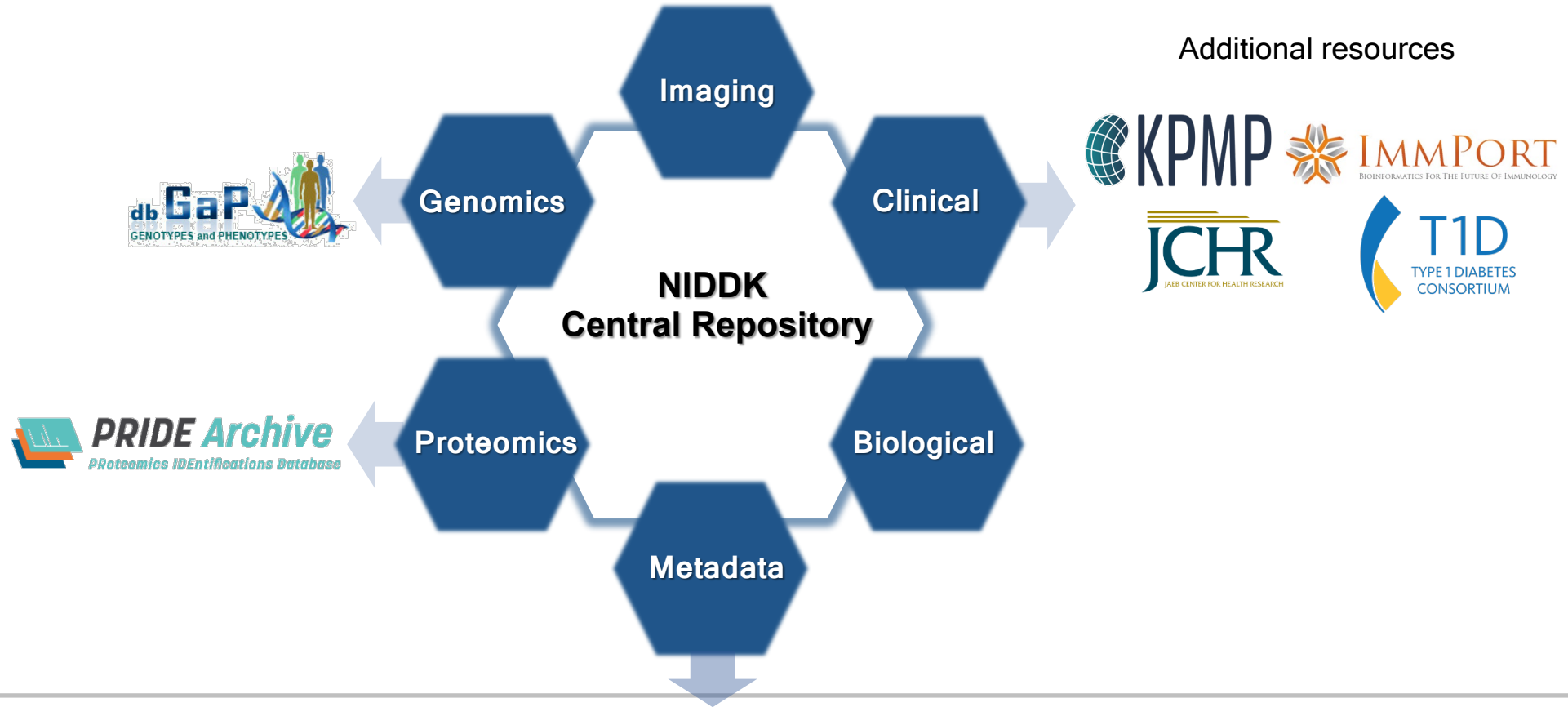
Building infrastructure & strengthening opportunities for NIDDK's scientific community

## Generalist Repositories,

- Broaden exposure and discoverability of NIDDK-funded research
- Support data ecosystems under FAIR and TRUST principles
- Reduce (and eliminate) data silos
- Improve reuse of NIDDK resources and increase their scientific value



# NIDDK Data Sharing Ecosystem



Additional resources



FAIRsharing.org  
standards, databases, policies

DataCite  
FIND, ACCESS, AND REUSE DATA

re3data.org  
REGISTRY OF RESEARCH DATA REPOSITORIES



Vivli  
CENTER FOR GLOBAL CLINICAL RESEARCH DATA



Planning Phase

NIH  
**HEAL**  
INITIATIVE

Google Dataset Search /

Schema.org

NIH U.S. National Library of Medicine  
ClinicalTrials.gov

# NIDDK Central Repository Vision & Mission

Expand the usefulness of NIDDK funded research by enabling qualified investigators to reuse existing resources to generate new findings

## Strategic Goals:



Improve resources' FAIR-ness and TRUST-worthiness and minimize barriers that limit resource utilization



Increase impact of resources, enhance data and biospecimen discoverability, provide tools that facilitate new research, and improve user experience



Advance understanding of best practices, develop and implement policies, and increase stakeholder engagement



National Institute of  
Diabetes and Digestive  
and Kidney Diseases

# Generalist Repositories and NIDDK-CR Vivli use case

## Data not eligible for NIDDK-CR submission

- NIDDK-funded projects' data (e.g., R01) may be deposited into Vivli
  - Projects are then indexed and searchable through NIDDK-CR
  - NIDDK-CR redirects requestors to Vivli to gain access following Vivli's established procedures

## Data deposited at NIDDK-CR

- NIDDK-CR studies' metadata are indexed and searchable in Vivli
  - Vivli redirects to NIDDK-CR for data request and approval per established NIDDK-CR procedures
  - Must be registered with NIDDK-CR to request access to data
- Approved requestors may upload data into Vivli for analysis
  - Must have an approved project specifying an intent to combine data
  - May combine only with data from Vivli members available in Vivli's secure environment







National Institute of  
Diabetes and Digestive  
and Kidney Diseases

# THANK YOU



For NIDDK DMS Policy information, visit  
<https://www.niddk.nih.gov/research-funding/research-resources/data-management-sharing>  
and NIDDK Information Network (dkNET)  
<https://dknet.org/rin/research-data-management>

For Repository Program Administrative enquiries, email us at  
[NIDDK-CRAAdmin@niddk.nih.gov](mailto:NIDDK-CRAAdmin@niddk.nih.gov)

For information on assigning permanent identifiers for your  
NIDDK-funded research outputs contact us at  
[NIDDKDataCite@niddk.nih.gov](mailto:NIDDKDataCite@niddk.nih.gov)

For more information on services and support visit our website at  
<https://repository.niddk.nih.gov> or email us at  
[NIDDK-CRsupport@niddk.nih.gov](mailto:NIDDK-CRsupport@niddk.nih.gov)



National Institute of  
Diabetes and Digestive  
and Kidney Diseases



National Institute of  
Diabetes and Digestive  
and Kidney Diseases

# APPENDIX



National Institute of  
Diabetes and Digestive  
and Kidney Diseases

# NIDDK Central Repository

Embracing flexibility to continue to support NIDDK's evolving mission

- **Rapidly growing number of collections**
  - Impressive number of collections available to the external community
  - Equal impressive number of investigators accessing resources
- **Centralized biospecimen inventory**
  - Vial level visibility
  - Rich and comprehensive biospecimen metadata
- **Streamlining to reduce (real | perceived) barriers to access**
  - Improving metrics to better monitor progress and compliance

